

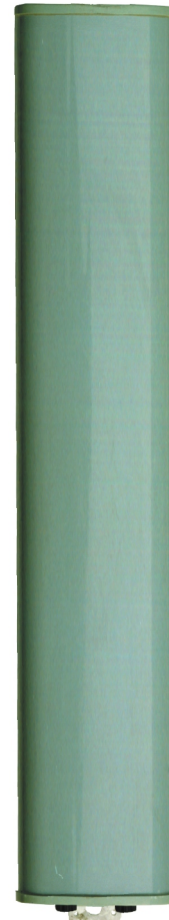
Model No . ABDBS0812016 / (6)

Electrical specifications

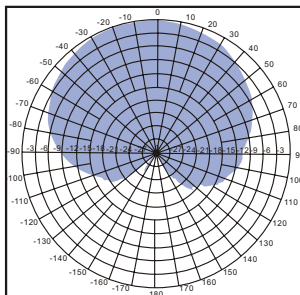
Frequency range	824-896MHz
Gain	16dBi
VSWR/50 Ohms	< 1.4
Horizontal beamwidth	120°
Vertical beamwidth	7°
Polarization	±45°
Cross-polar discrimination	> 15 dB
Maximum input power	600 W
Isolation	> 28 dB
Electrical downtilt	0° /6°
Front-to-back ratio	>30dB
Connector	2×N- Female , 2×7/16 Female
IM.3rd order(2×43dBm)	< -107 dBm
Lightning protection	Direct ground

Mechanical specifications

Dimensions of antenna (L×W×H)	2580 mm×268mm ×140mm
Weight of antenna	15.15Kg
Weight of mounting kits	2.75Kg
Installation position Adjustment	
Horizontal	360°
Angle of pitch	0~15°
Diameter of installation pole	Φ 60~110 mm
Radome material	UV Protected PVC
Rated wind speed	200Km/h



Horizontal pattern



Vertical pattern

