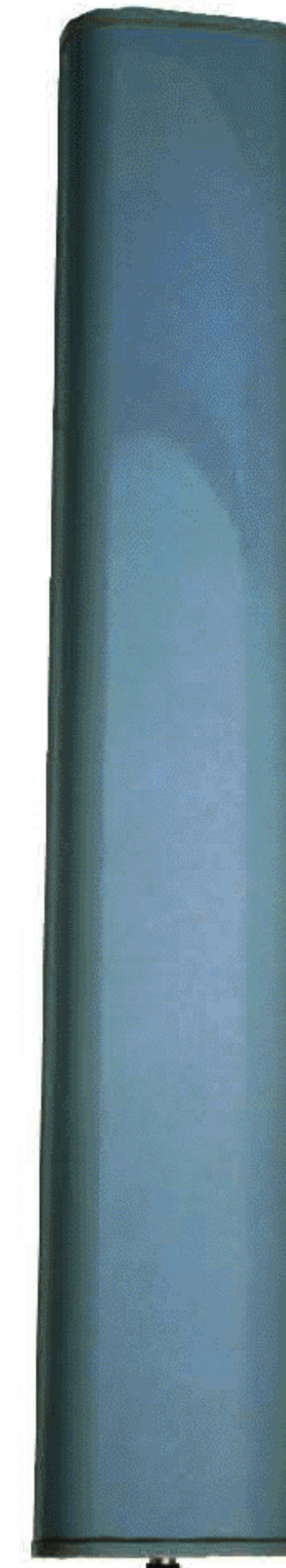


Model No . ABDBF0910514

Electrical specifications

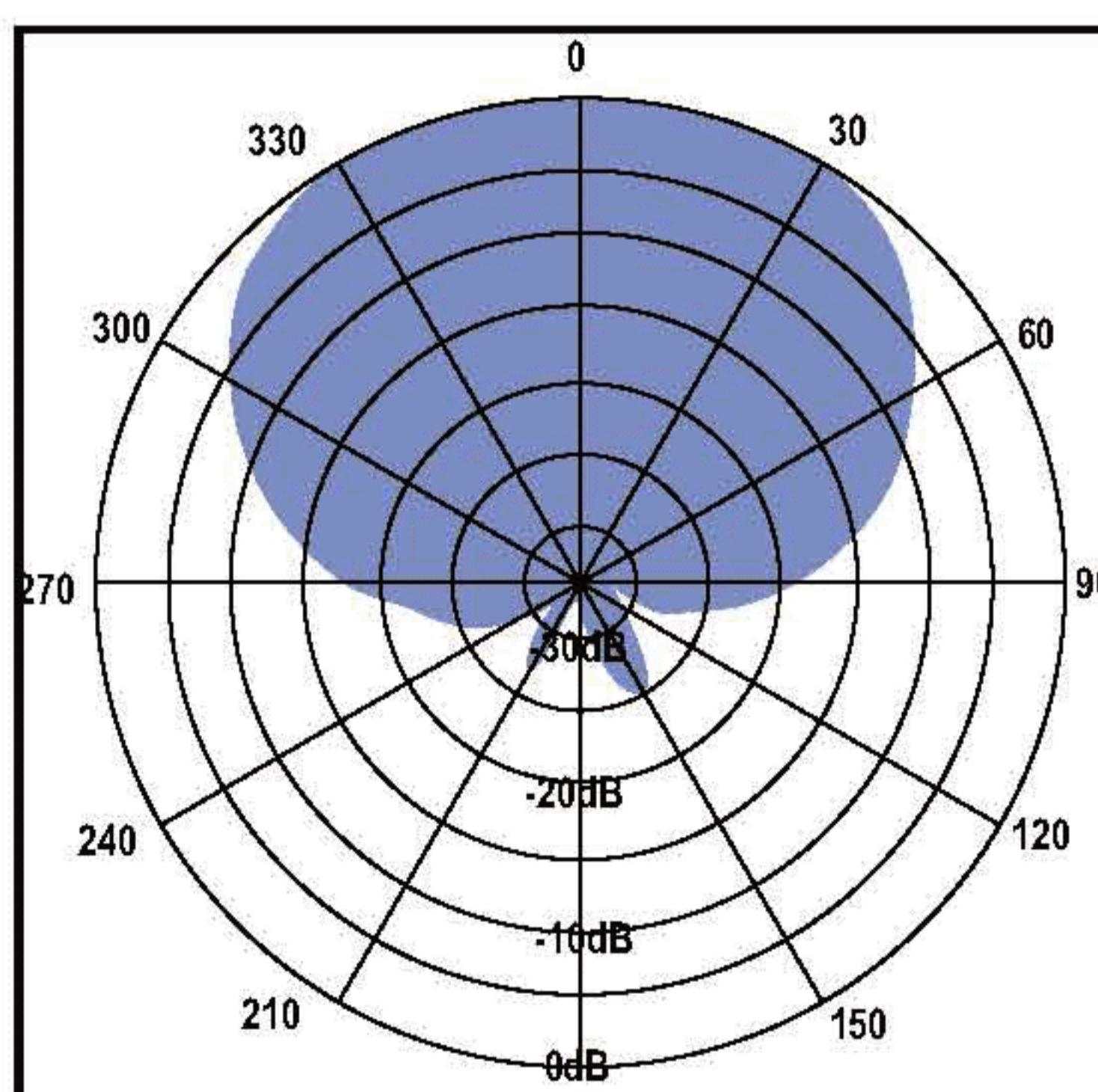
Frequency range	870~960 MHz
Gain	14 +/- 0.5 dBi
VSWR/50 Ohms	< 1.4
Horizontal beamwidth	105°
Vertical beamwidth	10°
Suppression of up lobe	< -18dB (870-960MHz)
Null filling	>15dB
Polarization	Vertical
Maximum input power	600 W
Isolation	>28 dB
Connector	7/16 Female
IM.3rd order(2 × 43dBm)	< -107 dBm
Lightning protection	Direct ground



Mechanical specifications

Dimensions of antenna(L×W×H)	1720mm × 262 mm × 118mm
Weight of antenna	11 Kg
Weight of mounting kits	2.75 Kg
Diameter of installation pole	Φ 60-110 mm
Radome material	UV Protected PVC
Rated wind speed	200Km/h

Horizontal pattern



Vertical pattern

